

A photograph of a sunset over a beach. The sun is low on the horizon, partially obscured by large, dark clouds. The sky is a mix of orange, yellow, and grey. The ocean is dark with white foam from waves breaking. The beach is in the foreground, with a person's head and shoulders visible in the water. The text 'CPACC Regional Archiving Centre' is overlaid in blue.

CPACC Regional Archiving Centre

Shelley-Ann Jules-Moore

CPACC

Caribbean Planning for Adaptation to Global Climate Change

Major Objective

To support Caribbean countries in preparing to cope with the adverse effects of global climate change, particularly sea-level rise, on coastal areas through vulnerability assessment, adaptation planning, and capacity building.

CPACC

Components 1

Sea Level

Sea Surface Temperature

Air Temperature

Precipitation

Relative Humidity

Barometric Pressure

Wind Speed, direction &
Gust

- Antigua
- Bahamas
- Barbados
- Belize
- Dominica
- Grenada
- Guyana
- Jamaica
- St Kitts
- St Lucia
- St Vincent
- Trinidad & Tobago

- Design/establishment of 18 Climate Monitoring stations in 12 CARICOM countries.
- Collection of data from the 18 sites

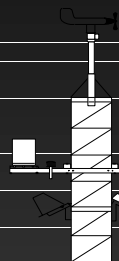
Regional Archiving Centre

Function

- Operator satellite base station for Component 1 automatic stations
- Initial QA/QC of sea level/meteorological data
- Archiving of data collected. Met data forwarded to CIMH for more detailed QA/QC and analysis.
- Data dissemination
- Summary and analysis of sea level and sea surface temperature

Geospatial Centre, UWI St Augustine

Data Acquisition



Climate Monitoring
Station Sensors

Satellite

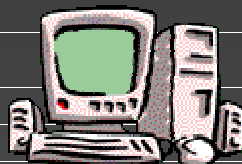


Current Process



Satellite Base
Station

R.A.C
(UWI)

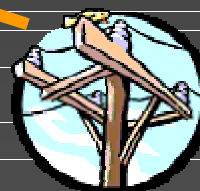


Processing:
QA/QC & Product Development

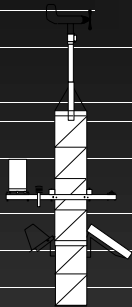
VITEL:Web Site

<http://www.vitelinc.com/oas/>

Database



Data Acquisition



Climate Monitoring
Station Sensors

Satellite

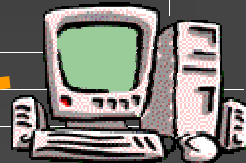


Proposed Process

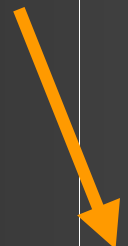
R.A.C
(UWI)



Processing:
QA/QC & Product Development



Satellite Base
Station



Regional Archiving Centre

QA/QC

- Initial QA/QC executed to identify stations that display operational problems (executed in conjunction with CIMH)
- Communicate problems to CIMH for their action
 - initiate problem resolution
 - identify whether problem due to communication process of the actual sensor.
- Detailed QA/QC executed on sea level and sea surface temperature data.

Data Dissemination

Via RAC Website

- Data Availability
- Access to recent data held in Database (approx. 2mts.)
- Site Information
- General Project Information

Data Archive

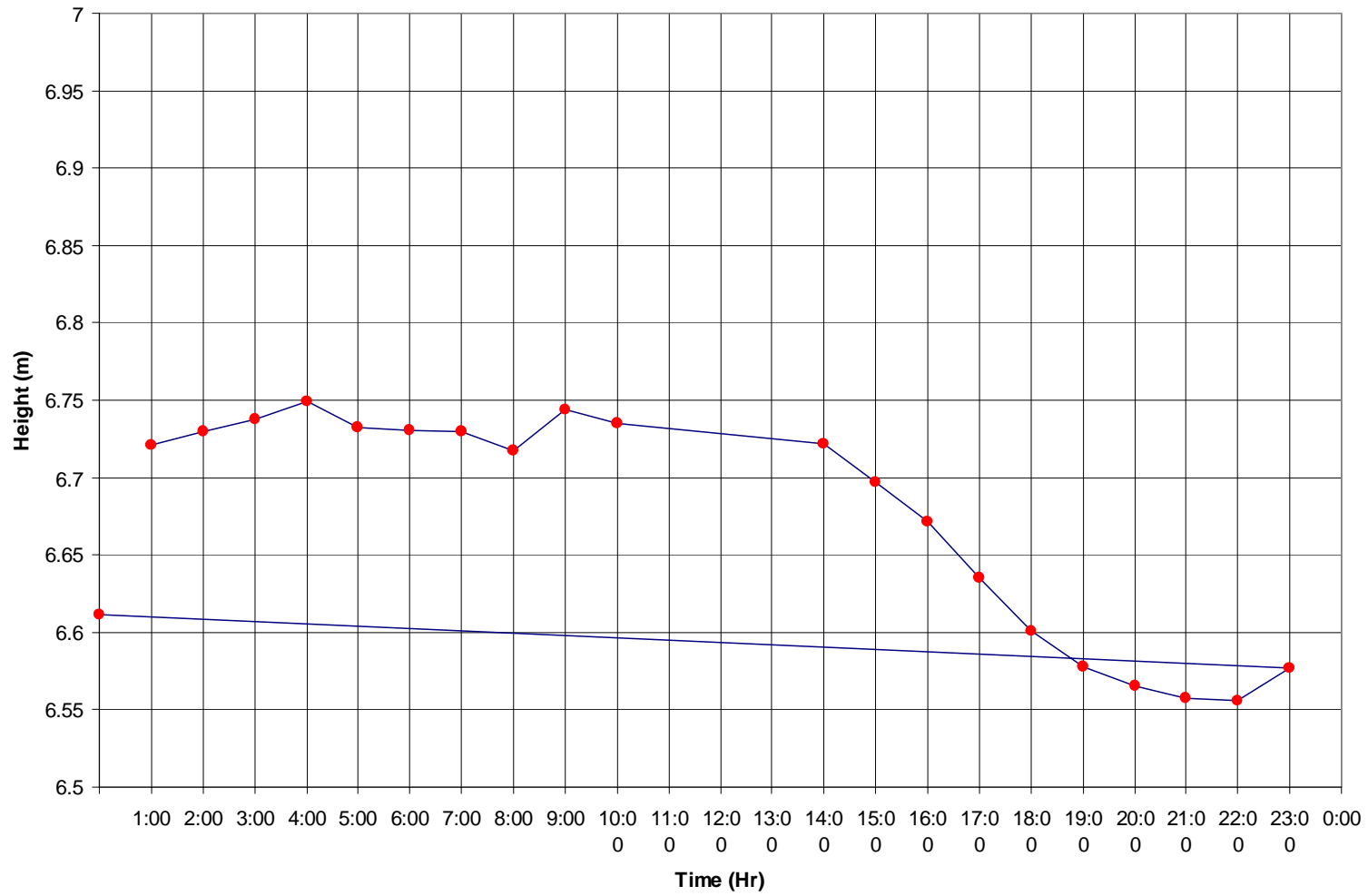
- Sea level and sea surface temperature corrected and archived in monthly format
- Metadata records created

Sea Level Preliminary Data Analysis

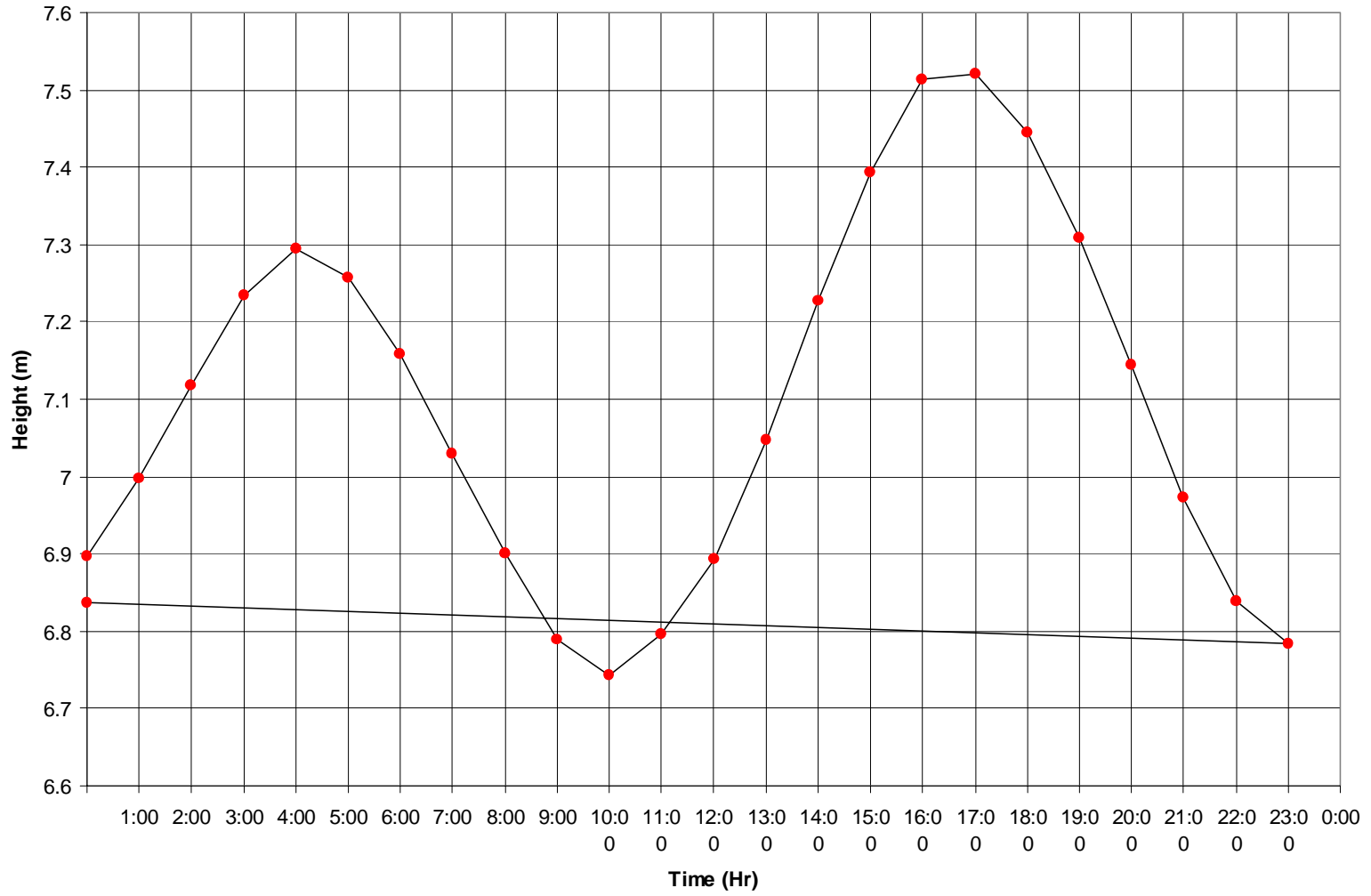
The Caribbean Region



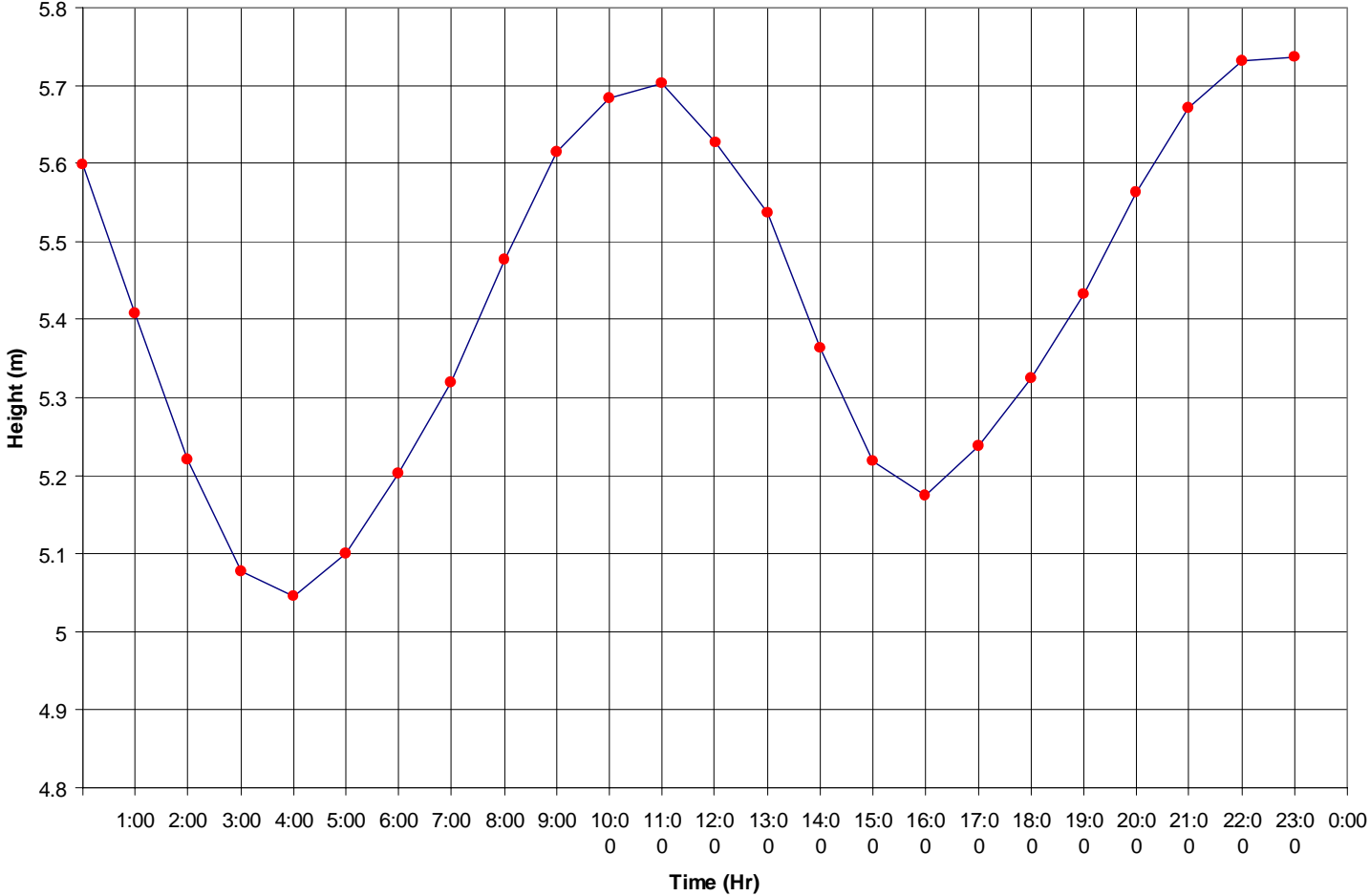
Parham: ANTIGUA Tidal Values (7th April, 1999)



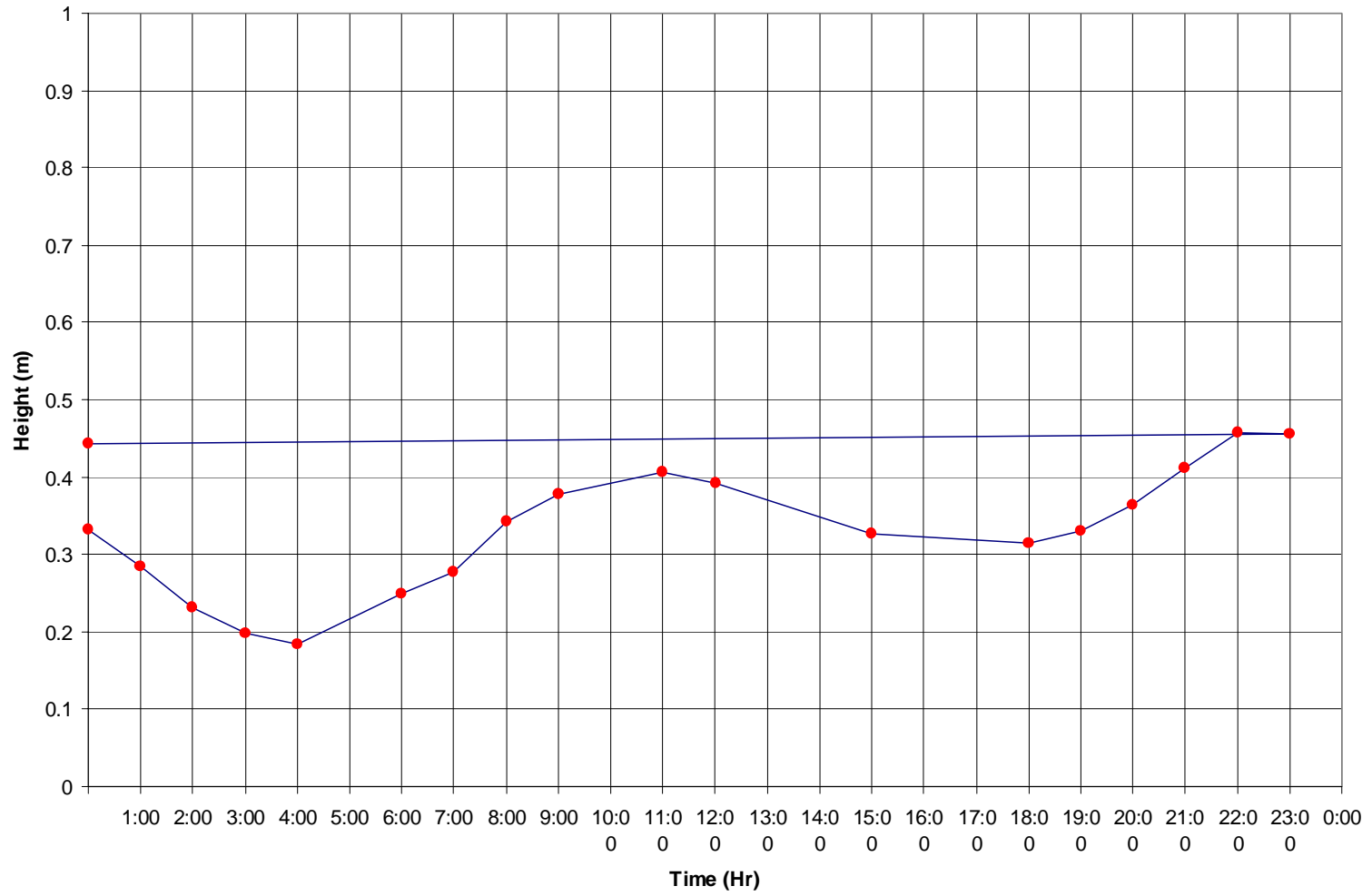
Lee Stoking Is.: BAHAMAS Tidal Values (23rd December, 1998)



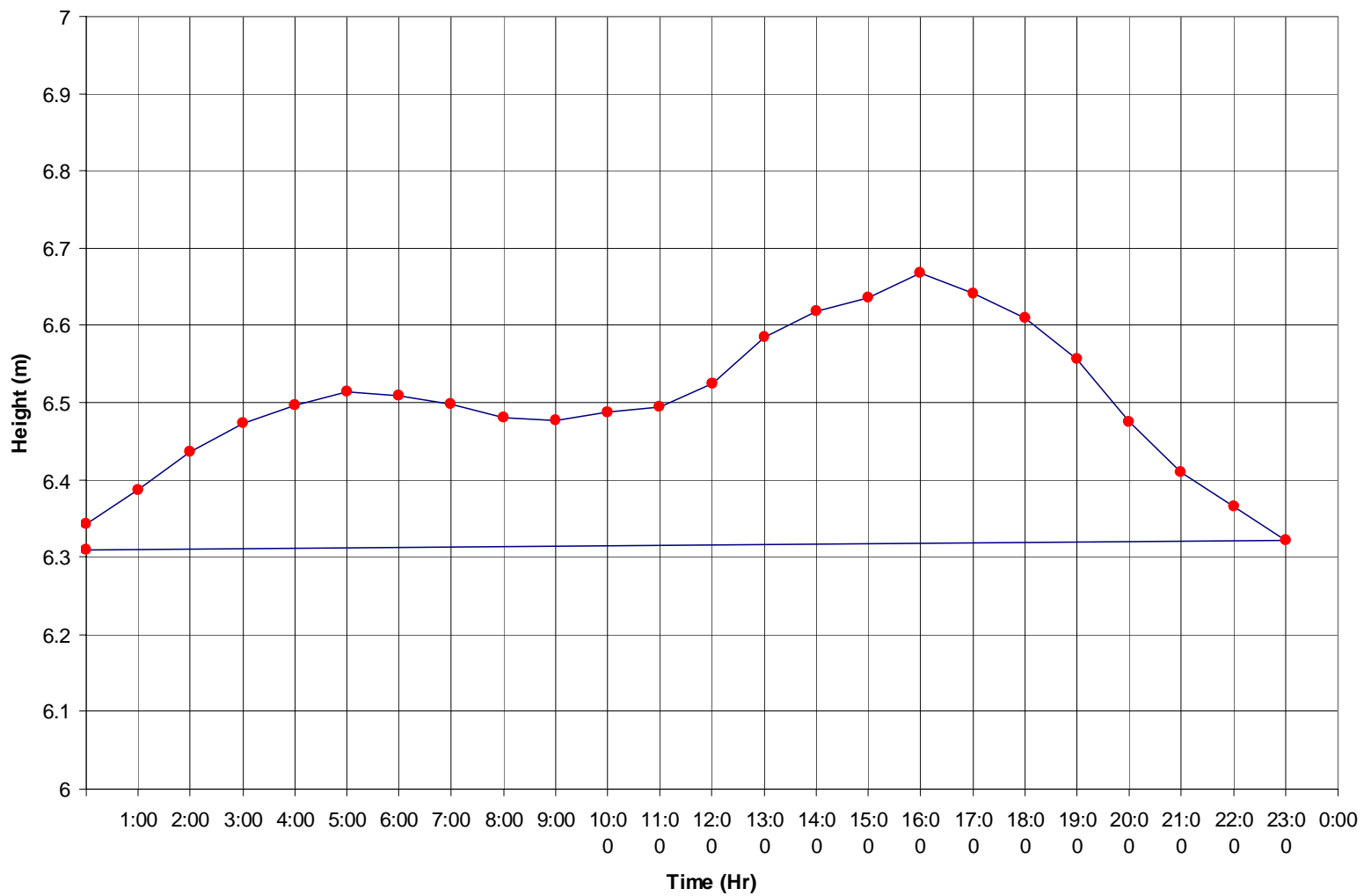
Bridgetown: BARBADOS Tidal Values (4th February, 1999)



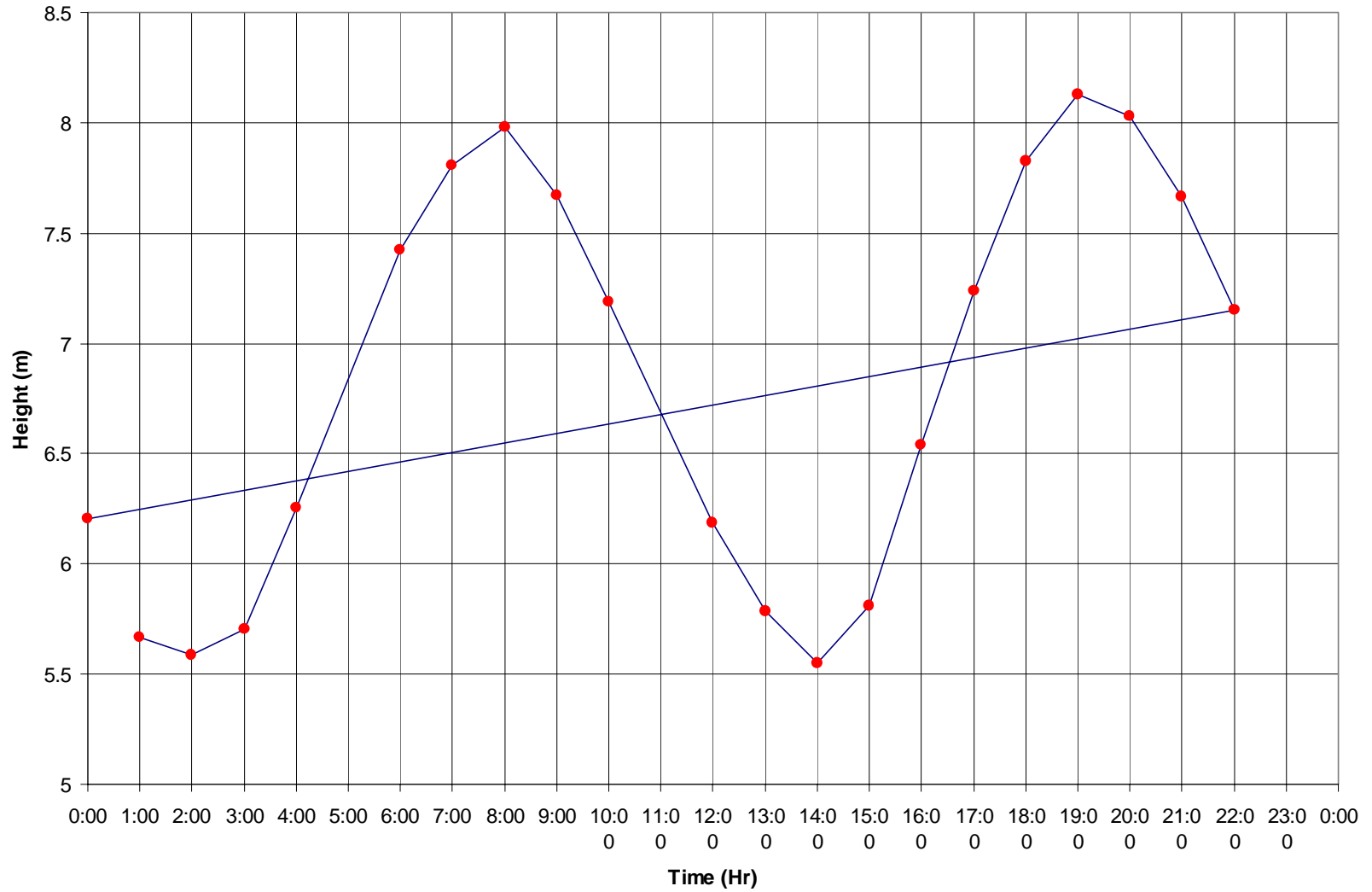
Belize City: BELIZE Tidal Values (25th January, 1999)



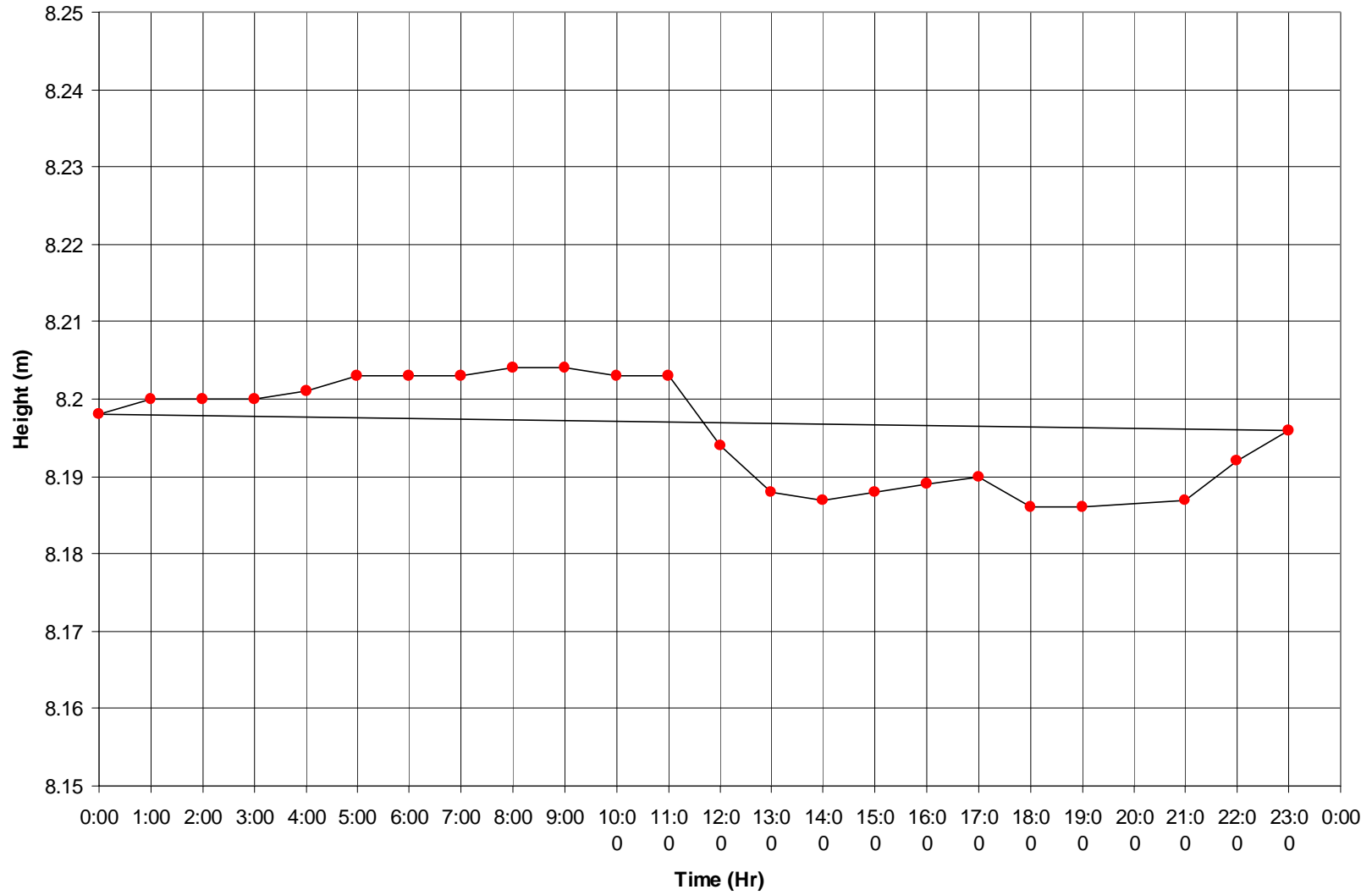
Roseau: DOMINICA Tidal Values (22nd January, 1999)



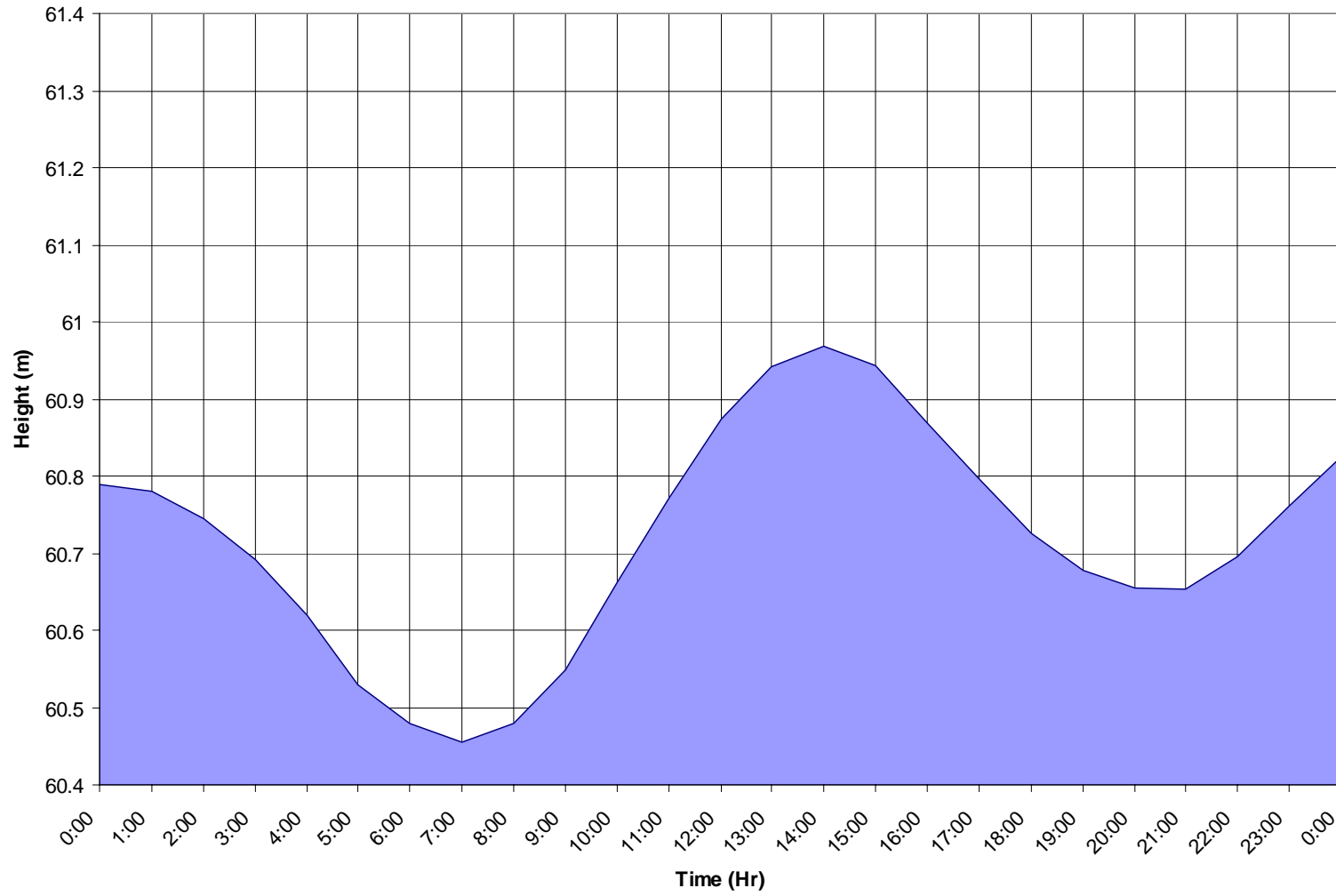
Risognol: GUYANA Tial Values (30th January, 1999)



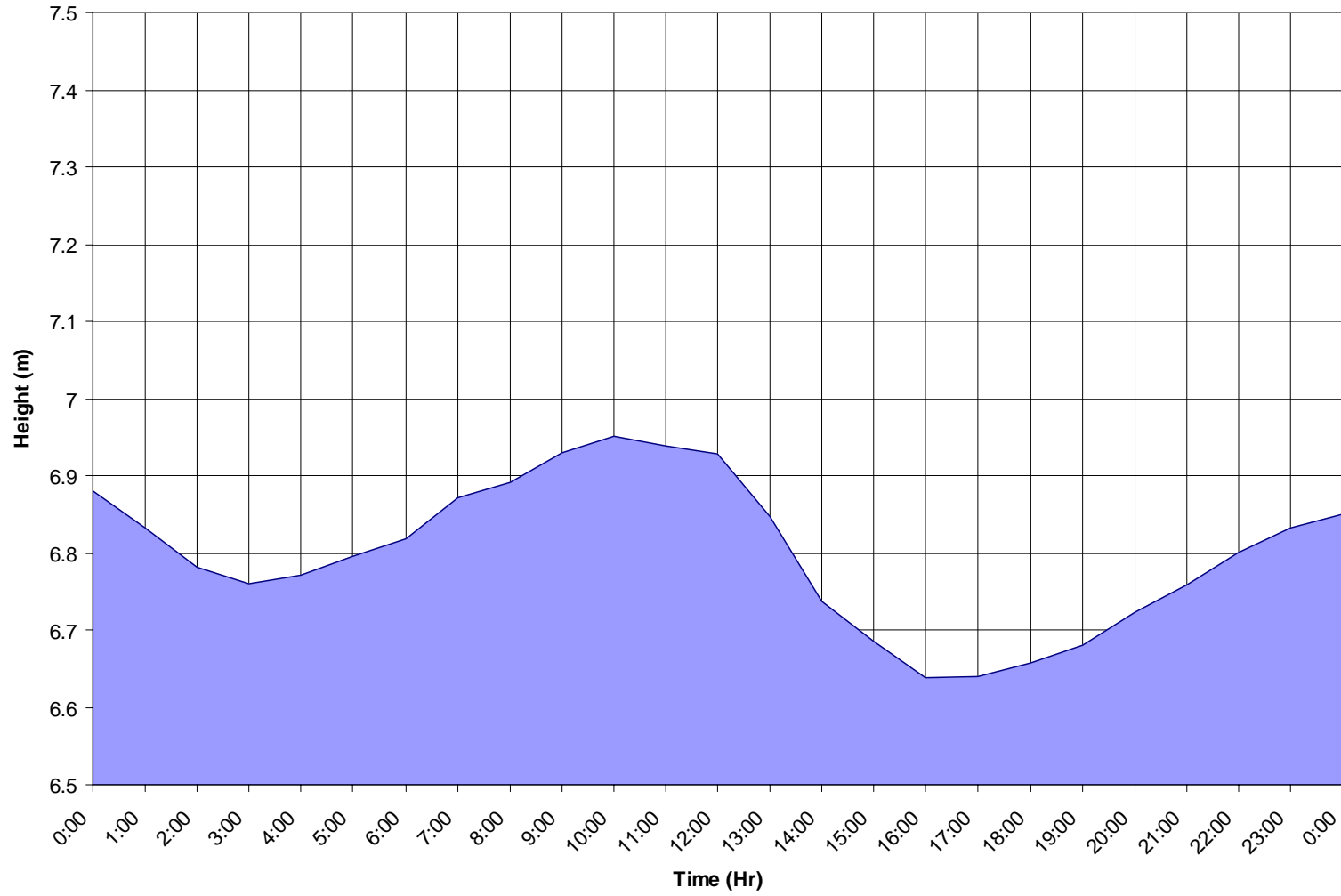
Prickley Bay: GRENADA Tidal Values (17th January, 1999)



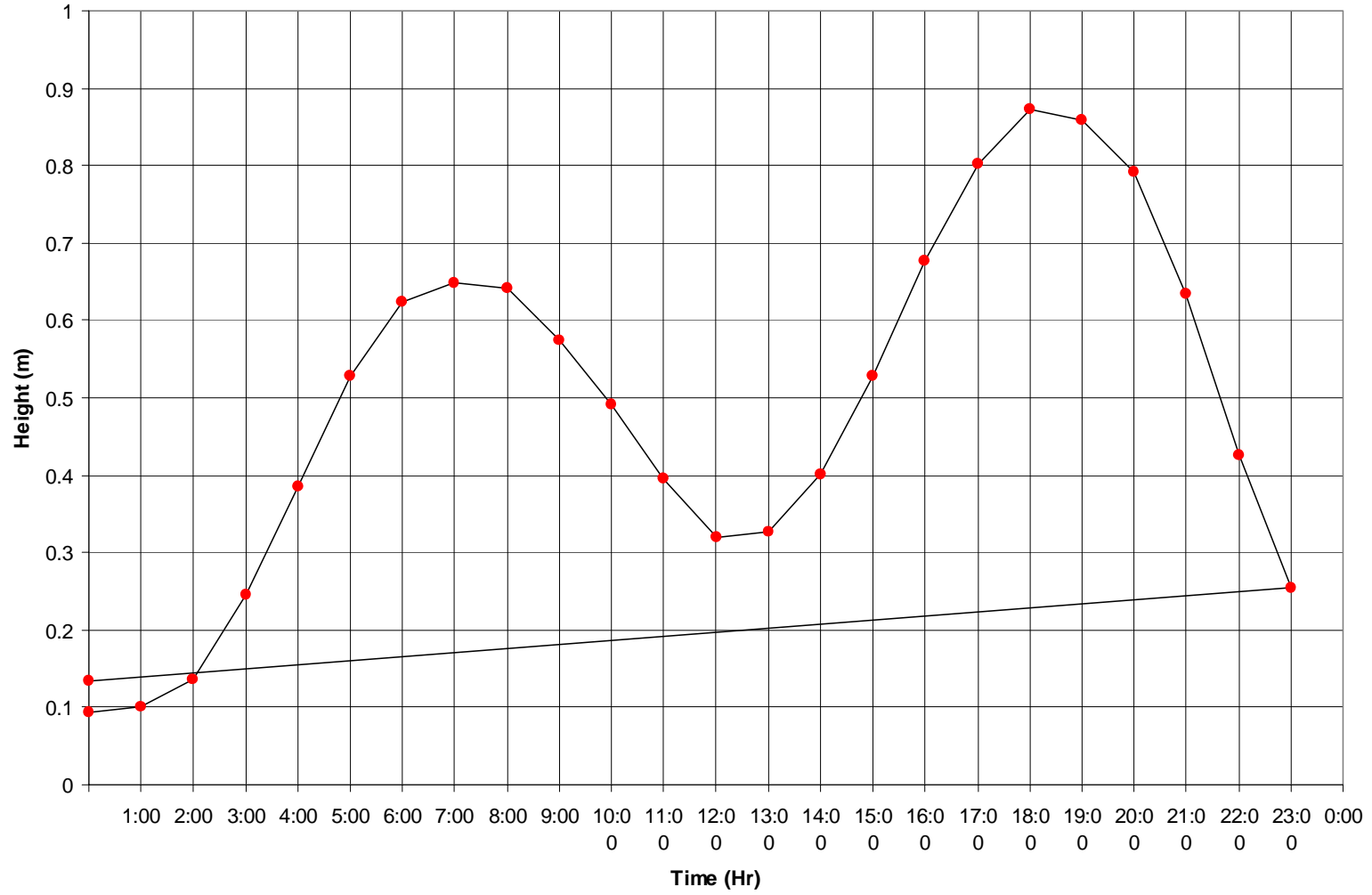
Discovery Bay: JAMAICA Tidal Values (1st January, 1999)



Castries: ST LUCIA Tidal Values (5th April, 1999)



Charlottetown: TRINIDAD & TOBAGO Tidal Values (16th January, 1999)



Contact Information

- <http://www.cpacc.org>
- CPACC/RPIU, Barbados: (246)- 417- 4580
- UWI Centre for Geospatial Studies, Trinidad:
(868)- 662-2002
- <http://www.vitelinc.com/oas/>