

The Bahamas

Component 5 Country Report



Presented by: Tamica J. Rahming

The Commonwealth of The Bahamas

Characteristics of The Bahamas:

Lands:

35 Major Islands

700 Cays

2,400 rocks

North -South Extent:

720 Km (448miles)

Northwest-Southeast Extent

(Measured from NW Little Bahama Bank to Inagua south east Bank

Greatest width - 800Km

(500miles) Cay Sal to Mayaguana

Land Area:13,933Km sq.

(5,382 miles sq.)

Total Area: 325,000kmsq

(124,000miles sq. depending on median or archipelagic line used)

Estimated Reef area:

10,000km sq. (3,800 sq. miles)

Protected Areas: 1,230Kmsq.

(approximately 500 sq. miles)



CPACC CORAL REEF MONITORING Pilot (Component 5)

Extent and Sources of Coral Reef Degradation through long term monitoring

Pilot Areas

Illustrating patch reefs, Fringing reefs, Channel reefs and windward reefs

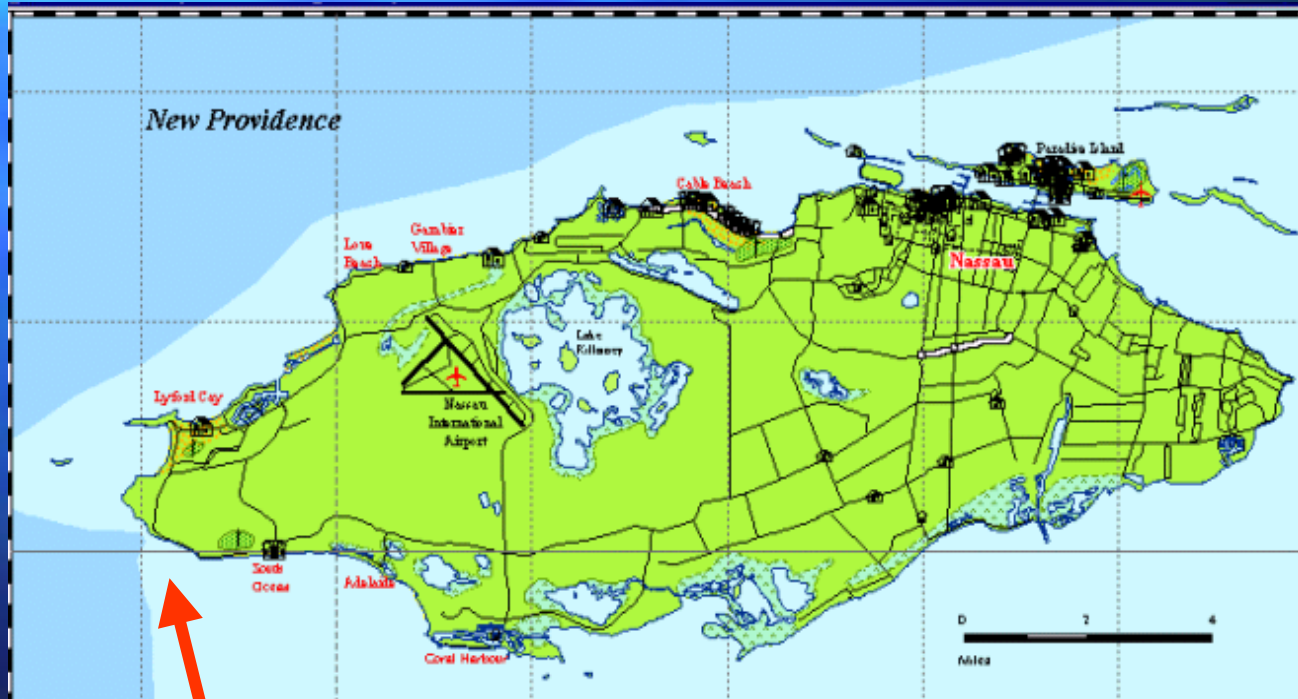
- **Man Jack Cay, Abaco**
Low impact
- **New Providence**
High impact
- **Exuma**
Medium impact



Pilot areas were strategically selected to show high, medium and low impact and how marine near shore communities have changed over time with changes in population and Land use

SOUTH WEST REEF SW New Providence: HIGH IMPACT

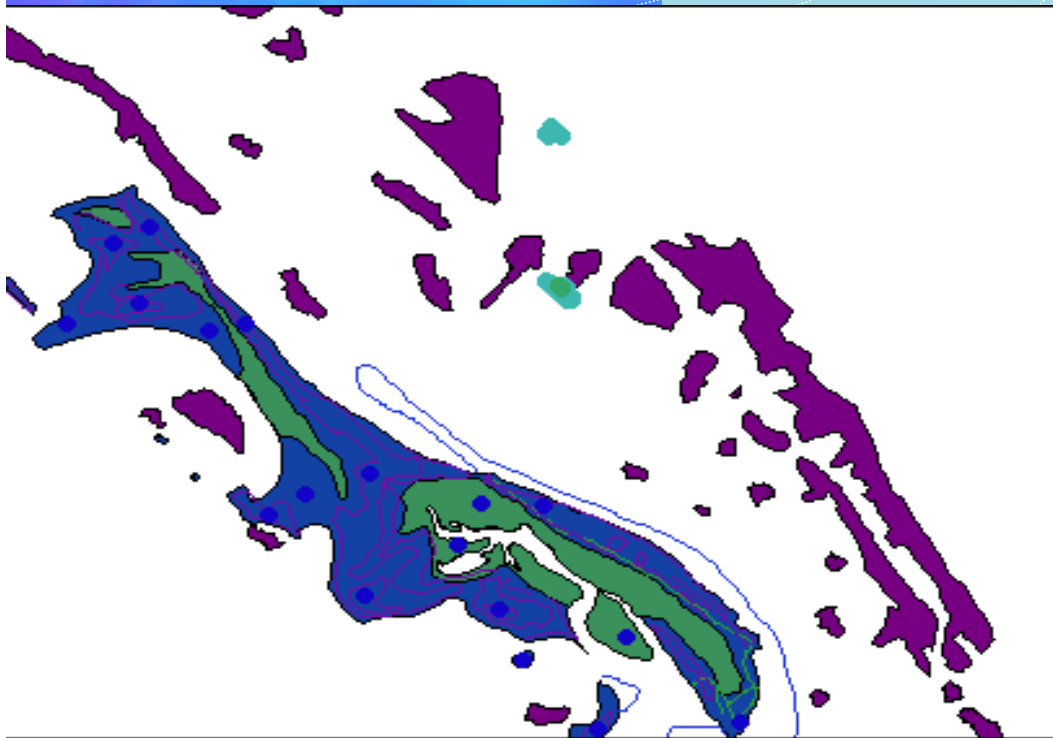
New Providence: 1970 population 101,503
(Capital of The Bahamas) 1990 population 171,542



South West Reef
High scuba diving activity
& fishing pressure

Abaco: Walker's Cay: Low Impact

Abaco 1970 population: 6,500
1990 population: 7,200

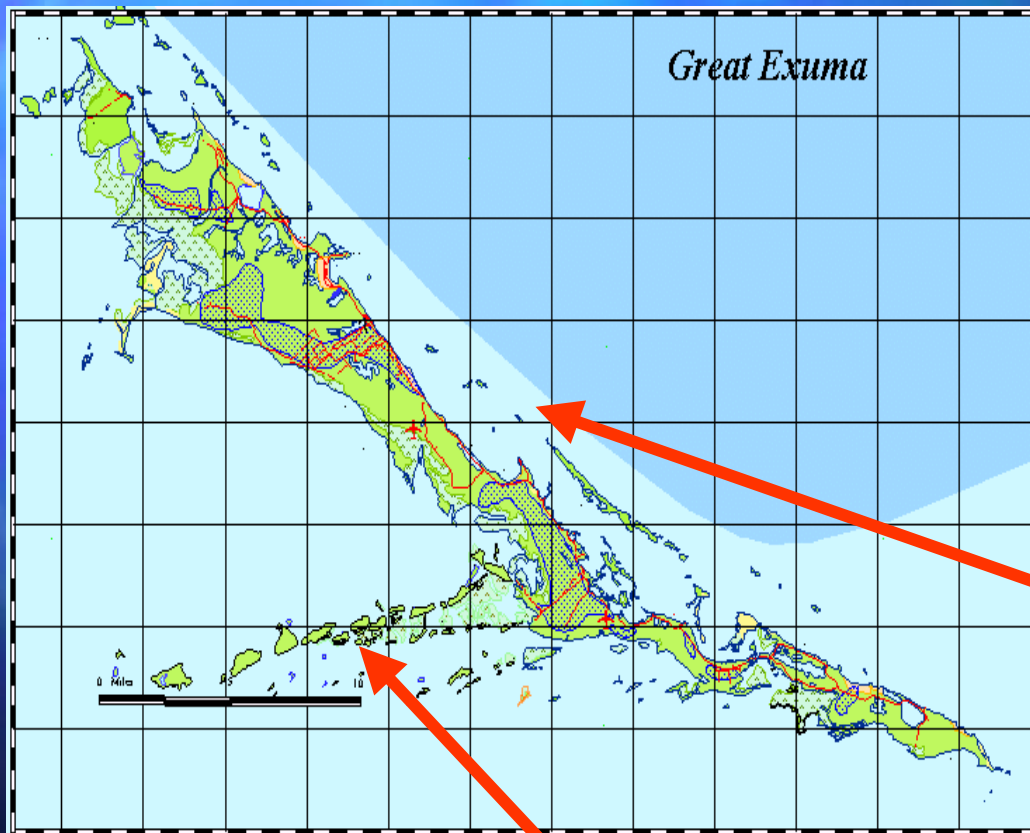


Highest point: 120'
Total area 649 sq. miles

- 40 sq. miles of protected area including Abaco National Park, Bahama Parrot Preserve, The Black Sound Cay National Reserve, Pelican Cays Land and Sea Park and Tilloo Cay National Protected Area
- Many marinas and dive shop facilities

Exuma Cays : Medium Impact

**Exuma: 1970 population 3,767
1990 population 3,539**



**Highest point: 125'
Total area 72 sq.miles**

**176 sq. miles protected as
Exuma Land and Sea Park**

**Site of Caribbean Marine
Research Centre with at least
10 years of monitoring data**

**Removal of Biodiversity
for scientific research**

Scuba diving throughout the Cays

Project Timeline

1999/2000

November – monitoring at New Providence

2000/2001

September - monitoring at both locations

- Data loggers set and retrieved at both location
- Analysis of 1999/2000 data

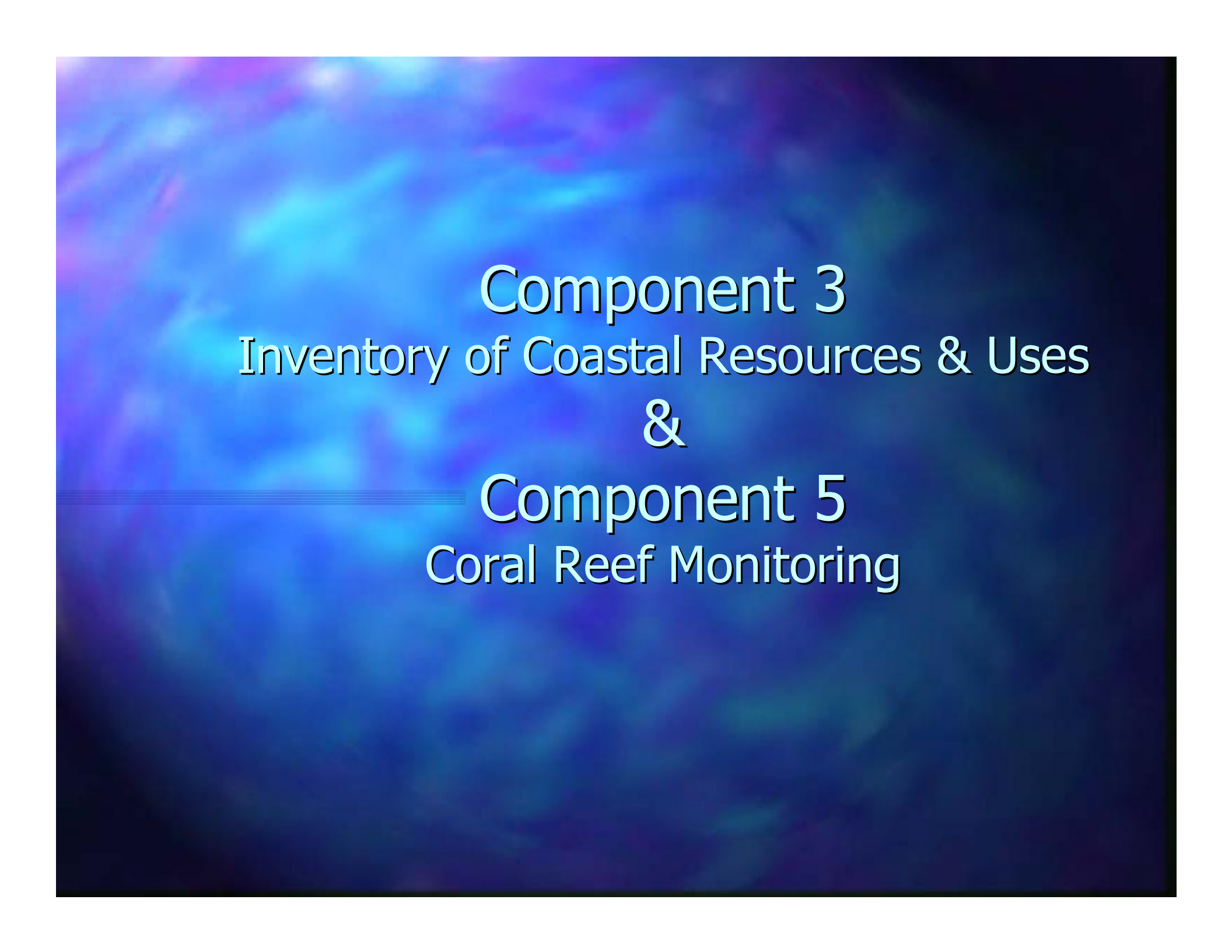
Project Timeline contd..

2001/2002

- September – monitoring to be conducted at Abaco and New Providence sites
 - Retrieve data loggers and conduct monitoring at mentioned sites
 - Image analysis of 2001 data
 - Establishment of Exuma site

Preliminary Results

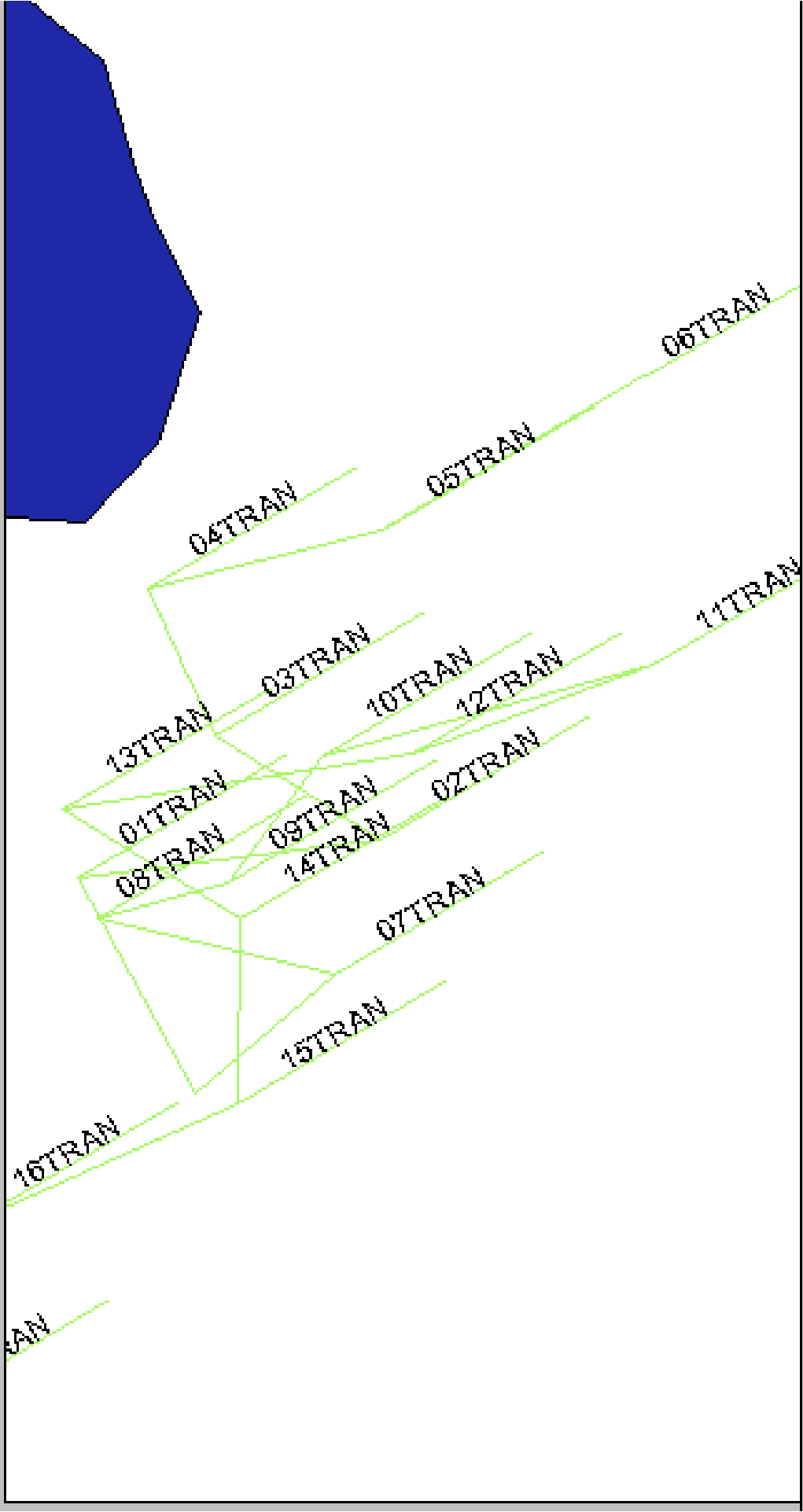
- Species list generated (flora, fauna)
- Random transect method does not accurately depict the health of the reefs



Component 3
Inventory of Coastal Resources & Uses
&
Component 5
Coral Reef Monitoring



Scale 1: 265,250
2,970,780

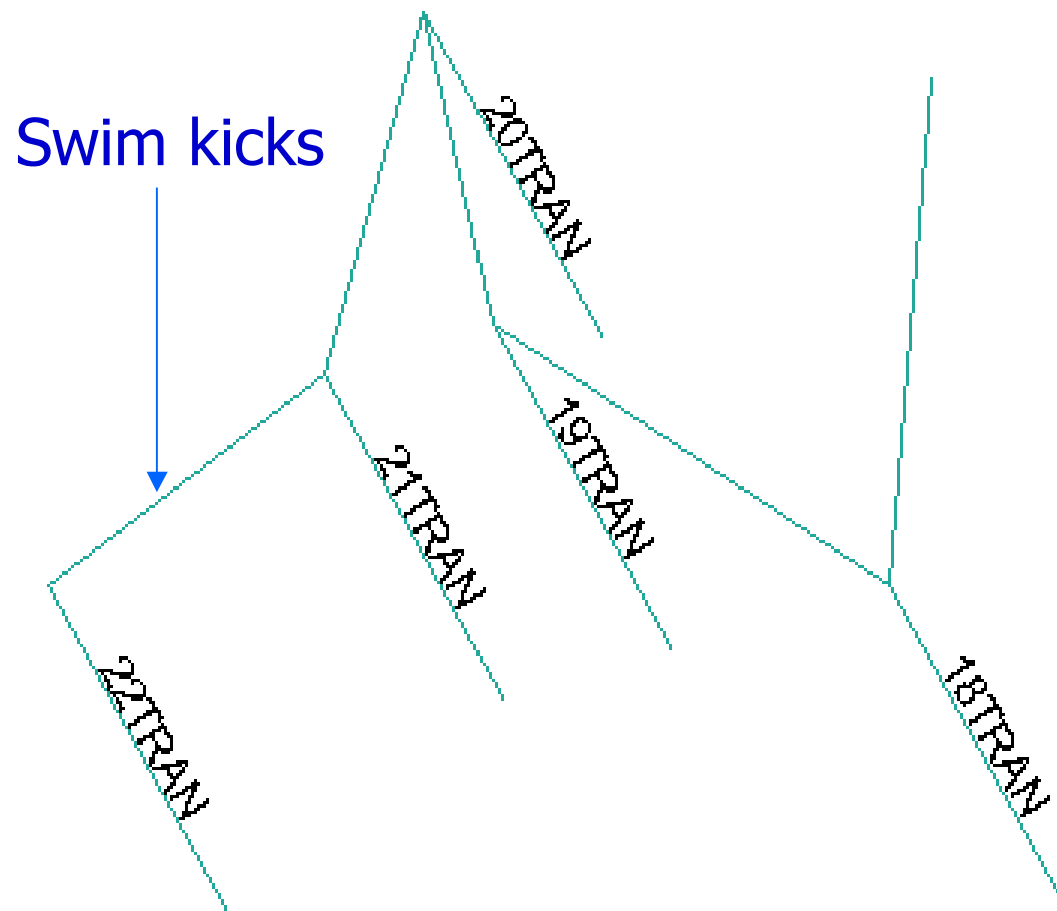




Scale 1:

265,191.85
2,971,665.22

- Transacts.shp
- Njman g2
- Njconl2
- Njcs t4
- Njfreef2
- Njspt
- Njfootp2
- Njcs t4
- Njre ef4



04TRAN
05TRAN
13TRAN 03TRAN
01TRAN 10TRAN
08TRAN 14TRAN 12TRAN
16TRAN 02TRAN
15TRAN 07TRAN

13TRAN
01TRAN
08TRAN

04TRAN 05TRAN
13TRAN 03TRAN
01TRAN 10TRAN
08TRAN 14TRAN 12TRAN
16TRAN 02TRAN
15TRAN 07TRAN

Microsoft Excel - CPACC data entry1.xls

File Edit View Insert Format Tools Data Window Help

Font: Arial, Size: 10, Bold, Italic, Underline, Paragraph, Styles, AutoSum, Increase/Decrease, Print, Help, Save, Close, Exit

Formula Bar: F188 =

	A	B	C	D	E	F
1	Location:	ManJack Cay, Abaco				
2	Transect Number:	1				
3	Tape Number:	3				ManJack Cay
4	Date of Filming:	9/25/00				1
5	Tran. Length:	20M				9/25/00
6	# of data points:	180				Do # points entered = ca
7	Analysis by:	TJR				
8	Date of Analysis:	10/12/00				
9						
10	Raw Data		Notes			Categories
11	GORG	A	01MJ0900001		GORG	Acropora cervicornis (AC
12	GORG	B	01MJ0900001		GORG	Acropora palmata (APAL
13	GORG	C	01MJ0900001		GORG	Agaricia agaricites (AAG
14	GORG	D	01MJ0900001		GORG	Agaricia grahamae (AGR
15	OTHR	E	01MJ0900001		OTHR	Agaricia humilis (AHUM)
16	GORG	F	01MJ0900001		GORG	Agaricia lamarcki (ALAM
17	OTHR	G	01MJ0900001		OTHR	Diploria labyrinthiformis (
18	OTHR	H	01MJ0900001		OTHR	Diploria strigosa (DSTR)

Ready

Navigation: 01TRAN / 02TRAN / 03TRAN / 04TRAN / 05TRAN / 06TI

NUM

Scale 1: 265,24
2,970,71

Microsoft Excel - CPACC data enty1.xls

File Edit View Insert Format Tools Data Window Help

Raw Data	Notes
11 GORG A	01MJ090001
12 GORG B	01MJ090001
13 GORG C	01MJ090001
14 GORG D	01MJ090001
15 OTHER E	01MJ090001
16 GORG F	01MJ090001
17 OTHER G	01MJ090001
18 OTHER H	01MJ090001
19 GORG I	01MJ090001
20 GORG J	01MJ090001
21 SAND A	01MJ090002

Categories

GORG	Acropora cemicornis (AC)
GORG	Acropora palmata (APAL)
GORG	Agarcia agaricites (AAG)
GORG	Agarcia grahamae (AGR)
OTHER	Agarcia humilis (AHUM)
GORG	Agarcia lamarcki (ALAM)
OTHER	Diploria labyrinthiformis (
OTHER	Diploria strigosa (DSTR)
GORG	Madracis mirabilis (MMIF)
GORG	Millipora alvicornis (MAL)
SAND	Millipora complanata (MC

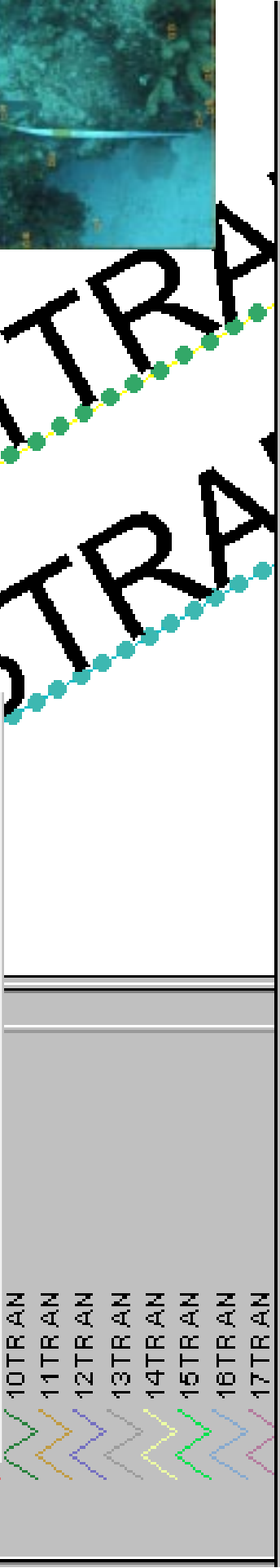
Do # points entered = ca

9/25/01

OA/OC CELLS

VALID ENTRY?

#NA=NO



133

01TRAN
02TRAN